

OLYMPIA SILVO



Specifications

Input Voltage	230V AC 50 Hz
Operating Temperature	-20 °C to 50 °C
Ingress Protection	IP 65
Colour Temperature	3000 K/4000 K /6000 K
Colour Rendering Index	> 70
Lifespan	Typically 25, 000 Hours
Power Factor	> 0.9
Safety Standard	EN 60598
EMC / EMI Standard	EN 61547/EN 55015
Harmonics	EN 61000-3-2 and 61000 - 3- 3

Product Description

An LED based High Bay light similar in appearance to conventional lighting but saving more energy and has lower light depreciation rates to decrease both energy and maintenance cost. Based on Chip-on-Board technology.

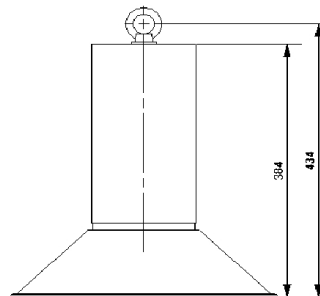
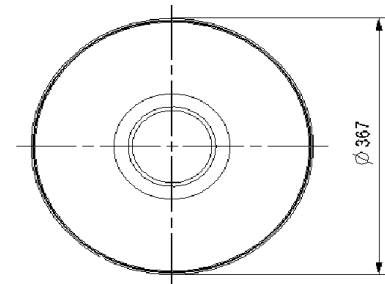
Other Features Dimmable (Optional)

Product Code	Input Power	Lumen Output	Replacement of	Size (Ø x H)
XH 01 11	120 W	6100	250W MH	Ø367 x 434

Mechanical

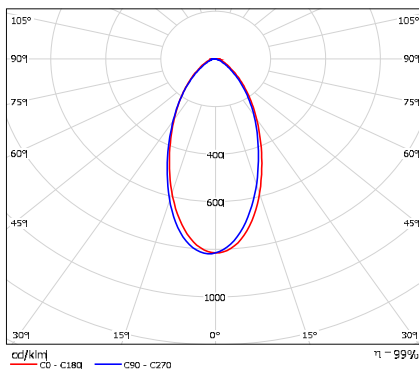
Housing	Powder Coated Die cast Aluminium
Optics	Aluminium Reflector
Installation	Suspended

Dimension Drawing



All dimensions in mm

Polar Candela Distribution



Application Area

Industrial Sheds, Warehouses, Railway Stations, Airport Hangars, Showrooms

